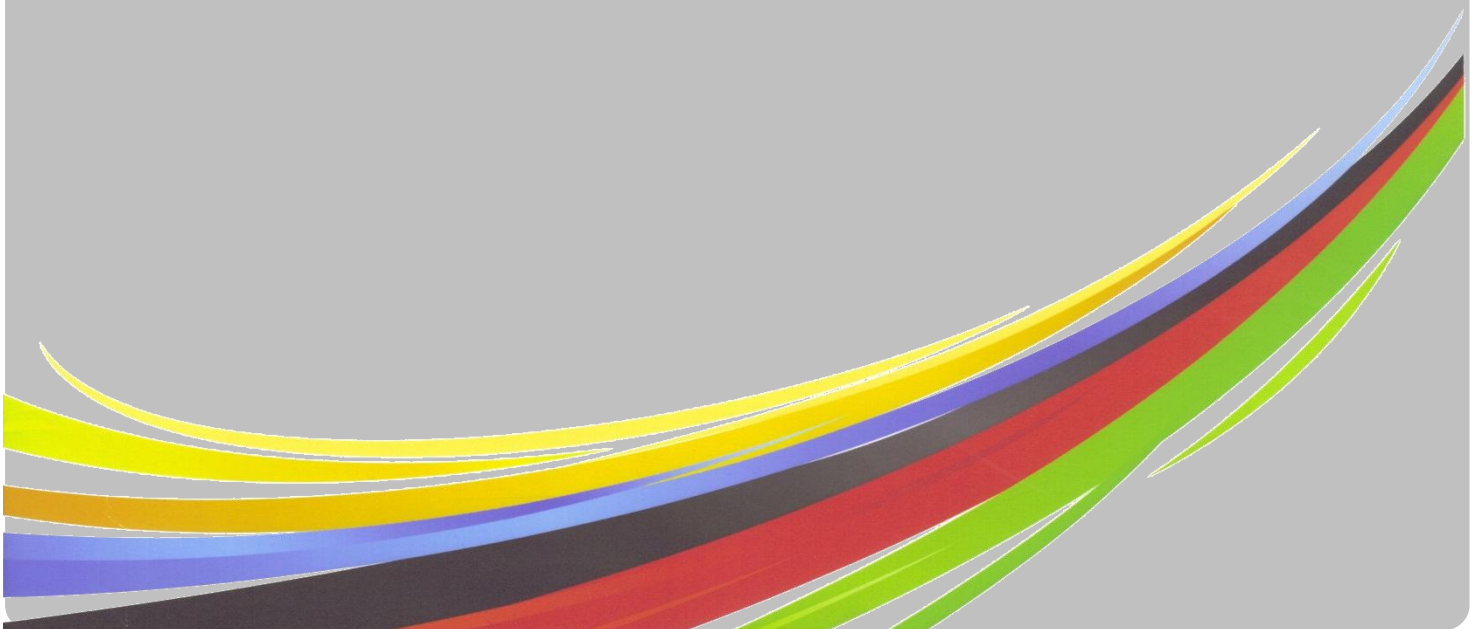




The Streetly School Sixth Form
Revised Entry Profiles and Curriculum 2012
Updated November 2011



Post 16 Curriculum 2012

Please note that the entry requirements and course information contained herein supplements the guidance printed within the Sixth Form prospectus. All information is accurate as of October 2011 and relates to courses starting in September 2012.

Entry Requirements

Entry Profile	Suggested Pathway
One or more passes (A*-C,P,M,D) from a GCSE or BTEC course and a range of subjects graded D-G	OCR National Award in Travel & Tourism and GCSE Mathematics and English (as appropriate)
Five passes (A*-C) in at least five different GCSE courses (<i>including English and Maths</i>). Mostly C grades	Four AS courses
Five passes (A*-C) in at least five different GCSE courses (<i>including English and Maths</i>). A range of B grades and higher	Four AS courses

In addition to the general entry profiles, **some courses carry additional entry requirements**. These may include the requirement that you've secured a GCSE pass in the subject to be studied, or a specified grade B at GCSE. Subjects with additional requirements are identified below:

Subject	Minimum grade required in a specified subject
Applied Science: Forensic or Medical (BTEC)	Two C grades in Science at GCSE
Art	C in Art
Biology	Two B grades in Science at GCSE
Business Studies	B in English
Chemistry	Two B grades in Science at GCSE
Dance	C grade at GCSE or other examined experience
Design and Technology	C grade at GCSE in Design and Technology
English Literature	B in English Literature
Geography	C in Geography, if taken at GCSE
History	B in History preferred
ICT	Merit in OCR Nationals Level 2 (two GCSE equivalent)
Mathematics	B in Maths
Physical Education	C in GCSE PE with a minimum B grade scored in the written component
Psychology	B in Maths
Religious Studies	C in Religious Studies
Spanish	B in Spanish
Sport (BTEC)	Merit overall in Level 2 BTEC <i>or</i> C grade at GCSE

Options blocks are provisional and are subject to change. Such changes are made only where an improved 'best fit' is achieved. All courses are offered in good faith and are subject to student demand.

All courses are Level 3 with the exception of the OCR National Award in Travel and Tourism.

A	B	C	D
Level 2 OCR National Award in Travel and Tourism			
Health & Social Care (OCR)		BTEC Applied Science: Forensic <i>or</i> Medical	Dance
BTEC Business	Art	Drama	Design and Technology
Film Studies	English Language & Literature	ICT (OCR)	ICT (OCR)
Religious Studies	ICT (OCR)	Sociology	Music Technology
Geography		Geography	BTEC Sport and Exercise Science
			Travel & Tourism (OCR)
BTEC Business	Art	BTEC Applied Science: Forensic <i>or</i> Medical	Dance
Film Studies	Biology	Biology	Design and Technology
Religious Studies	Business Studies	Chemistry	Economics
Geography	English Language & Literature	Drama	English Literature
Maths	History	Geography	History
Psychology	ICT (OCR)	ICT (OCR)	ICT (OCR)
Spanish	Maths	Psychology	Music Technology
		Sociology	Physical Education
			BTEC Sport and Exercise Science
			Travel & Tourism (OCR)
			SWAPS

Strengthening Walsall's Achievement at Post-16

More courses are available overleaf.

Please note that SWAPS courses are timetabled alongside courses within block D. This means that students must select a subject from *either* block D *or* from the SWAPS block, *not* both.

Strengthening Walsall's Achievement at Post-16

SWAPS is an initiative involving Walsall College and five Walsall schools. Through SWAPS, students in each school are able to access additional A levels and a range of BTEC subsidiary diploma BTEC courses in addition to courses provided within the school.

SWAPS courses are taught on Monday afternoon and Wednesday morning each week and transport is provided in the middle of the day to support students moving between the home school and SWAPS provider. Senior staff from the college and the five SWAPS schools work in partnership to plan for all aspects of SWAPS courses and to ensure the quality of SWAPS provision.

Overall, the SWAPS programme aims to provide students with a wider range of courses to meet individual needs. Further information and guidance, including information about entry requirements, will be made available as part of the application process.

SWAPS courses 2012

Aldridge School - A Science College Tynings Lane, Aldridge, Walsall, West Midlands WS9 0BG	French	Music	Physics				
Alumwell Business and Enterprise College Primley Avenue, Walsall, West Midlands WS2 9UA	Applied Science	BTEC Business	BTEC Health & Social Care	BTEC Information Technology	Law	Psychology	BTEC Sport
Grace Academy Darlaston, Herberts Park Road, Wednesbury, WS10 8QJ	Applied ICT	Physics	Sociology				
Pool Hayes Arts and Community School Castle Drive, Willenhall, West Midlands WV12 4QZ	Drama	Music	Music Technology	Physics			
Walsall College Wisemore Campus Littleton Street West Walsall WS2 8ES	BTEC Fashion	BTEC Public Services					